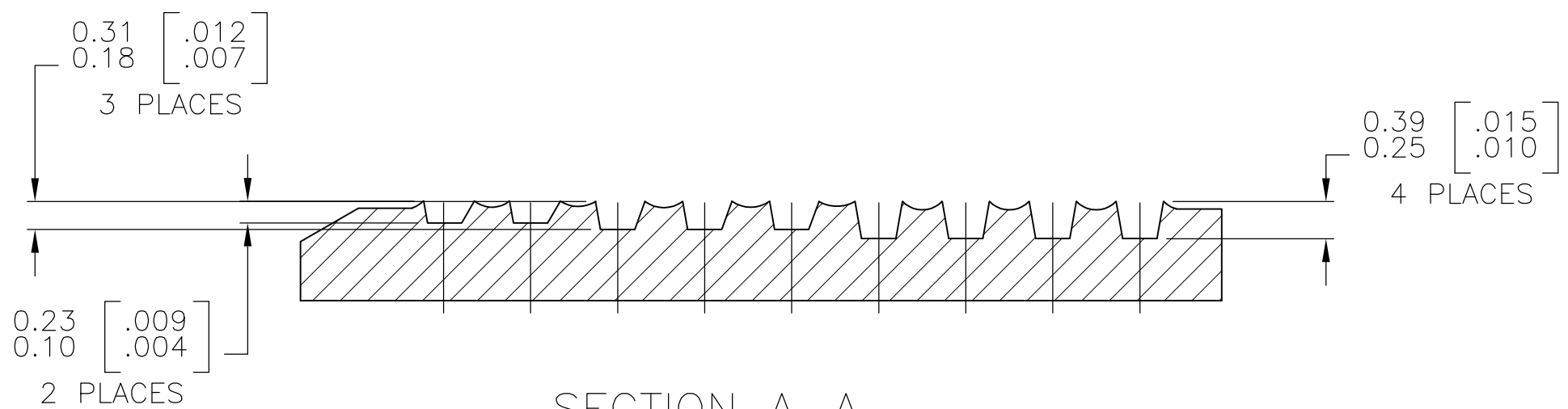
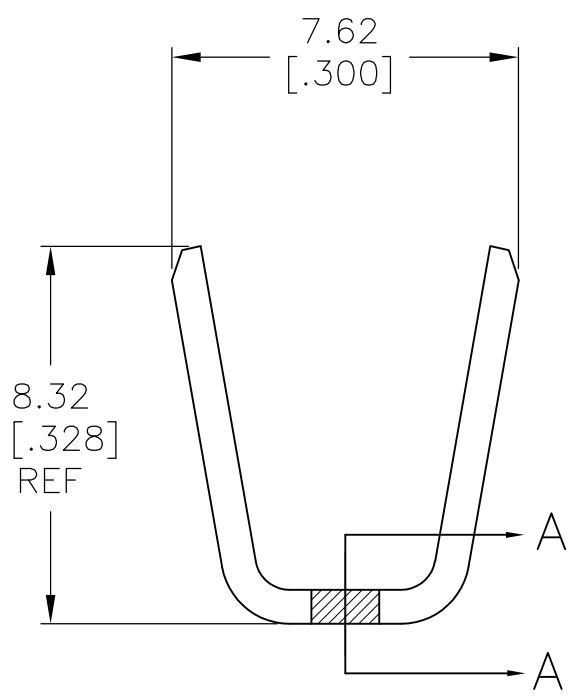
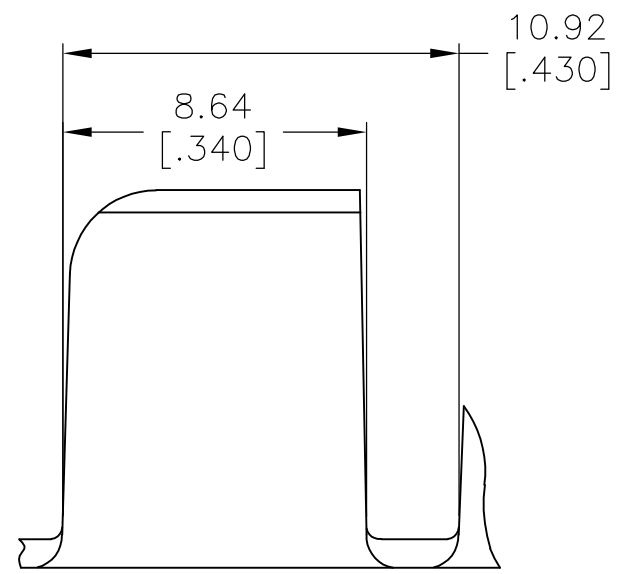
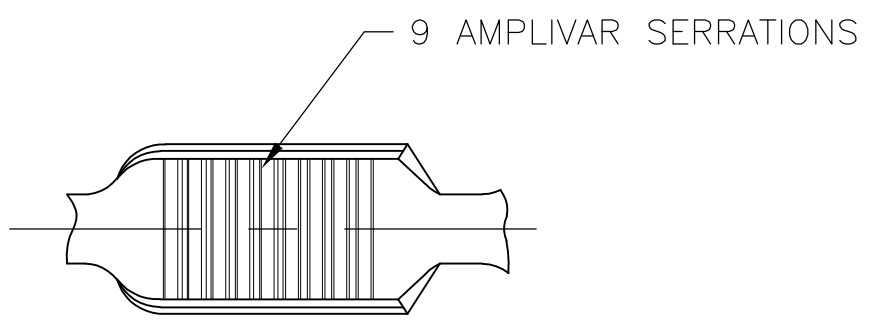


THIS DRAWING IS UNPUBLISHED. RELEASED FOR PUBLICATION  
 © COPYRIGHT - By - ALL RIGHTS RESERVED.

LOC	DIST	REVISIONS					
		P	LTR	DESCRIPTION	DATE	DWN	APVD
AF	50		A4	REVISED PER ECR-13-017674	12DEC2013	GRZ	JL



- CONTINUOUS STRIP ON REELS.
- DIMENSIONS IN BRACKETS ARE IN INCHES.
- WIRE RANGE: 14000 - 22000 CMA.
- CRIMP WIDTH: .250 F TYPE, CURVED ANVIL  
 CRIMP HEIGHT (±.003)=(TOTAL CMA+36,500)/421,000  
 CRIMP WIDTH: .250 F TYPE, FLAT ANVIL  
 CRIMP HEIGHT (±.003)=(TOTAL CMA+32,700)/421,000  
 CRIMP WIDTH: .270 F TYPE, CURVED OR FLAT ANVIL  
 CRIMP HEIGHT (±.003)=(TOTAL CMA+34,500)/470,600  
 GENERAL APPLICATION GUIDELINES MUST BE FOLLOWED AS SPECIFIED IN CATALOG #82221  
 FOR APPLICATOR INFORMATION CALL:1-800-722-1111  
 FOR PRODUCT INFORMATION CALL:1-800-522-6752

1742898-1  
PART NO

THIS DRAWING IS A CONTROLLED DOCUMENT.		DWN	JR RUTH	02MAY11	<b>STE</b> TE Connectivity			
DIMENSIONS: mm [INCHES]		CHK	KURT RANDOLPH	02MAY11				
TOLERANCES UNLESS OTHERWISE SPECIFIED:		APVD	KURT RANDOLPH	02MAY11	NAME			
0 PLC ± -		PRODUCT SPEC		SPLICE, AMPLIVAR				
1 PLC ± -		APPLICATION SPEC		RESTRICTED TO				
2 PLC ± -		SIZE	A3	CAGE CODE	00779	DRAWING NO	C-1742898	
3 PLC ± 0.38 [.015]		WEIGHT	-		SCALE	6:1	SHEET	1 OF 1
4 PLC ± -		CUSTOMER DRAWING		REV		A4		
ANGLES ± 1° 0'		MATERIAL		REF 0.76±0.05		[.030±.002] BRASS		
FINISH		TIN PLATE						