





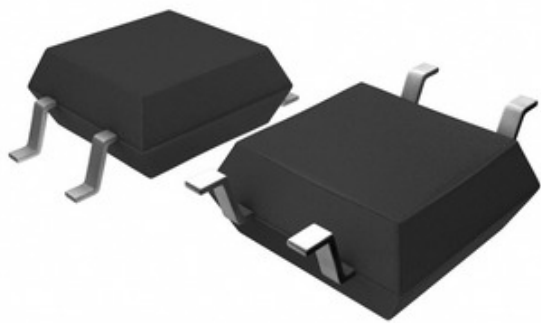
CEL (California Eastern

PS7200U-1A-A

Varenummer:	PS7200U-1A-A
Producent / Mærke:	CEL (California Eastern Laboratories)
Produkt beskrivelse	SSR RELAY SPST-NO 40MA 0-80V
Dataark:	 PS7200U-1A-A.pdf
RoHs Status	 Blyfri / RoHS-kompatibel
Lager tilstand	3737 pcs stock
Skib fra	Hong Kong
Forsendelsesmåde	DHL/Fedex/TNT/UPS/EMS


[ANMODNING OM TILBUD](#)

Laboratories)



Billede kan være repræsentation. Se specifikationer for produktdetaljer.

Specifikationer for PS7200U-1A-A

VARENUMMER	PS7200U-1A-A
FABRIKANT	CEL (California Eastern Laboratories)
BESKRIVELSE	SSR RELAY SPST-NO 40MA 0-80V
BLYFRI STATUS / ROHS STATUS	Blyfri / RoHS-kompatibel
M/ENGDE TILG/ENGELIG	3737 pcs
DATABLAD	 PS7200U-1A-A.pdf
SPÆNDING - BELASTNING	0V ~ 80V
SPÆNDING - INDGANG	1.1VDC
AFSLUTNINGSSLIL	Gull Wing
LEVERANDØR DEVICE PACKAGE	4-SOP (2.54mm)
SERIE	PS, OCMOS
EMBALLAGE	Tube
PAKKE / TILFÆLDE	4-SOP (0.173", 4.40mm)
OUTPUT TYPE	AC, DC
ON-STATE RESISTANCE (MAX)	25 Ohms
MONTERINGSTYPE	Surface Mount
FUGTFØLSOMHEDSNIVEAU (MSL)	1 (Unlimited)
LOAD CURRENT	40mA
BLYFRI STATUS / ROHS STATUS	Lead free / RoHS Compliant
DETALJERET BESKRIVELSE	Solid State Relay SPST-NO (1 Form A) 4-SOP (0.173", 4.40mm)
KREDSLØB	SPST-NO (1 Form A)

Relaterede tags

CEL (California Eastern Laboratories) PS7200U-1A-A	PS7200U-1A-A Distributør	PS7200U-1A-A Leverandør
PS7200U-1A-A pris	PS7200U-1A-A Billeder	PS7200U-1A-A Image
PS7200U-1A-A PDF Datablad	PS7200U-1A-A Download datablad	PS7200U-1A-A datablad
PS7200U-1A-A lager	Køb PS7200U-1A-A	Køb CEL (California Eastern Laboratories) PS7200U-1A-A
CEL (California Eastern Laboratories) PS7200U-1A-A	CEL (California Eastern Laboratories) Leverandør	CEL (California Eastern Laboratories) Distributør
CEL (California Eastern Laboratories) PS7200U-1A-A	California Eastern Labs PS7200U-1A-A	California Eastern Laboratories PS7200U-1A-A
CEL PS7200U-1A-A	CEL (California Eastern Laboratories) PS7200U-1A-A	

Relaterede produkter

 <p>PS7200U-1A-E3-A producenter: CEL (California Eastern Laboratories) Beskrivelse: SSR RELAY SPST-NO 40MA 0-80V På lager: 6490 pcs</p> <p>RFQ</p>	 <p>PS7200R-1A-F3 producenter: CEL (California Eastern Laboratories) Beskrivelse: SSR RELAY SPST-NO 120MA 0-40V På lager: 4805 pcs</p> <p>RFQ</p>
 <p>PS7200R-1A-F3-L-A producenter: CEL (California Eastern Laboratories) Beskrivelse: SSR RELAY SPST-NO 120MA 0-40V På lager: 5262 pcs</p> <p>RFQ</p>	 <p>PS7200U-1A-F3-A producenter: CEL (California Eastern Laboratories) Beskrivelse: SSR RELAY SPST-NO 40MA 0-80V På lager: 6841 pcs</p> <p>RFQ</p>
 <p>PS7205B-1A-A producenter: CEL (California Eastern Laboratories) Beskrivelse: SSR RELAY SPST-NO 500MA 0-80V På lager: 4633 pcs</p> <p>RFQ</p>	 <p>PS7200R-1A-L-A producenter: CEL (California Eastern Laboratories) Beskrivelse: SSR RELAY SPST-NO 120MA 0-40V På lager: 4769 pcs</p> <p>RFQ</p>
 <p>PS7205B-1A-F3-A producenter: CEL (California Eastern Laboratories) Beskrivelse: SSR RELAY SPST-NO 500MA 0-80V På lager: 2782 pcs</p> <p>RFQ</p>	 <p>PS7206-1A producenter: CEL (California Eastern Laboratories) Beskrivelse: SSR RELAY SPST-NO 600MA 0-60V På lager: 3108 pcs</p> <p>RFQ</p>
 <p>PS7205B-1A-E3-A producenter: CEL (California Eastern Laboratories) Beskrivelse: SSR RELAY SPST-NO 500MA 0-80V På lager: 3540 pcs</p> <p>RFQ</p>	 <p>PS7200R-1A-F3-A producenter: CEL (California Eastern Laboratories) Beskrivelse: SSR RELAY SPST-NO 120MA 0-40V På lager: 4567 pcs</p> <p>RFQ</p>
 <p>PS7200R-1A-E3-A producenter: CEL (California Eastern Laboratories) Beskrivelse: SSR RELAY SPST-NO 120MA 0-40V På lager: 3425 pcs</p> <p>RFQ</p>	 <p>PS7200R-1A-A producenter: CEL (California Eastern Laboratories) Beskrivelse: SSR RELAY SPST-NO 120MA 0-40V På lager: 4045 pcs</p> <p>RFQ</p>

Copyright © 2020 Pålidelig distributør af elektroniske komponenter

E-mail: Info@infinity-electronic.com

Adresse: 17F, Gaylord Commercial Building, 114-118 Lockhart Road, Wan Chai, Hongkong

