








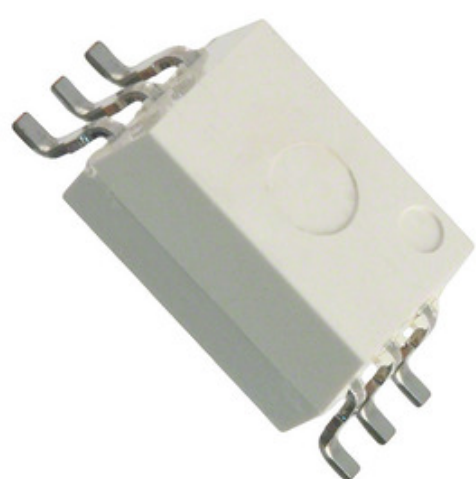
CEL (California Eastern

PS9303L-AX

Varenummer:	PS9303L-AX
Producent / Mærke:	CEL (California Eastern Laboratories)
Produkt beskrivelse	OPTOISO 5KV PUSH PULL 6DIP GW  1.PS9303L-AX.pdf  2.PS9303L-AX.pdf  3.PS9303L-AX.pdf  4.PS9303L-AX.pdf
Dataark:	
RoHS Status	 Blyfri / RoHS-kompatibel
Lager tilstand	23253 pcs stock
Skib fra	Hong Kong
Forsendelsesmåde	DHL/Fedex/TNT/UPS/EMS





[ANMODNING OM TILBUD](#)

Laboratories)



Billede kan være repræsentation. Se specifikationer for produkt detaljer.

Specifikationer for PS9303L-AX

VARENUMMER	PS9303L-AX
FABRIKANT	CEL (California Eastern Laboratories)
BESKRIVELSE	OPTOISO 5KV PUSH PULL 6DIP GW
BLYFRI STATUS / ROHS STATUS	Blyfri / RoHS-kompatibel
M/ENGDE TILG/ENGELIG	23253 pcs
DATABLAD	 1.PS9303L-AX.pdf  2.PS9303L-AX.pdf  3.PS9303L-AX.pdf  4.PS9303L-AX.pdf
SPÆNDING - SUPPLY	4.5 V ~ 20 V
SPÆNDING - ISOLERING	5000Vrms
SPÆNDING - VIDERESEND (VF) (TYP)	1.6V
LEVERANDØR DEVICE PACKAGE	6-SMD
SERIE	NEPOC
STIGNING / FALLTID (TYP)	120ns, 90ns
FORPLANTNINGSFORSINKELSE TPLH / TPHL (MAX)	500ns, 550ns
EMBALLAGE	Bulk
PAKKE / TILFÆLDE	6-SOIC (0.268", 6.80mm Width)
OUTPUT TYPE	Push-Pull, Totem Pole
ANDRE NAVNE	PS9303LAX
DRIFTSTEMPERATUR	-40°C ~ 100°C
ANTAL KANALER	1
MONTERINGSTYPE	Surface Mount
FUGTFØLSOMHEDSNIVEAU (MSL)	1 (Unlimited)
BLYFRI STATUS / ROHS STATUS	Lead free / RoHS Compliant
INDGANGE - SIDE 1 / SIDE 2	1/0
INPUT TYPE	DC
DETALJERET BESKRIVELSE	Logic Output Optoisolator 1Mbps Push-Pull, Totem Pole 5000Vrms 1 Channel 15kV/μs CMTI 6-SMD
DATAHASTIGHED	1Mbps
NUVÆRENDE - OUTPUT / CHANNEL	25mA
NUVÆRENDE - DC FORWARD (IF) (MAX)	20mA
COMMON MODE TRANSIENT IMMUNITY (MIN)	15kV/μs

Relaterede tags

CEL (California Eastern Laboratories) PS9303L-AX	PS9303L-AX Distributør	PS9303L-AX Leverandør
PS9303L-AX pris	PS9303L-AX Billeder	PS9303L-AX Image
PS9303L-AX PDF Datablad	PS9303L-AX Download datablad	PS9303L-AX datablad
PS9303L-AX lager	Køb PS9303L-AX	Køb CEL (California Eastern Laboratories) PS9303L-AX
CEL (California Eastern Laboratories) PS9303L-AX	CEL (California Eastern Laboratories) Leverandør	CEL (California Eastern Laboratories) Distributør
CEL (California Eastern Laboratories) PS9303L-AX	California Eastern Labs PS9303L-AX	California Eastern Laboratories PS9303L-AX
CEL PS9303L-AX	CEL (California Eastern Laboratories) PS9303L-AX	

Relaterede produkter

 <p>PS92D05S producenter: C&K Beskrivelse: SWITCH PUSHBUTTON På lager: 129283 pcs RFQ</p>	 <p>PS9303L-V E3-AX producenter: Renesas Electronics America Beskrivelse: OPTOISO 5KV PUSH PULL 6DIP GW På lager: 48746 pcs RFQ</p>
 <p>PS9213-F3-A producenter: CEL (California Eastern Laboratories) Beskrivelse: OPTOISO 2.5KV OPN COLLECTOR 5SOP På lager: 6670 pcs RFQ</p>	 <p>PS9303L-V-AX producenter: Renesas Electronics America Beskrivelse: OPTOISO 5KV PUSH PULL 6DIP GW På lager: 31751 pcs RFQ</p>
 <p>PS9303L-E3-AX producenter: Renesas Electronics America Beskrivelse: OPTOISO 5KV PUSH PULL 6DIP GW På lager: 47080 pcs RFQ</p>	 <p>PS9213-A producenter: CEL (California Eastern Laboratories) Beskrivelse: OPTOISO 2.5KV OPN COLLECTOR 5SOP På lager: 2944 pcs RFQ</p>
 <p>PS9303L-V-AX producenter: CEL (California Eastern Laboratories) Beskrivelse: OPTOISO 5KV PUSH PULL 6DIP GW På lager: 5483 pcs RFQ</p>	 <p>PS9214-F3-A producenter: CEL (California Eastern Laboratories) Beskrivelse: OPTOISO 2.5KV OPN COLLECTOR 5SOP På lager: 2845 pcs RFQ</p>
 <p>PS9303L-E3-AX producenter: CEL (California Eastern Laboratories) Beskrivelse: OPTOISO 5KV PUSH PULL 6DIP GW På lager: 5370 pcs RFQ</p>	 <p>PS9214-A producenter: CEL (California Eastern Laboratories) Beskrivelse: OPTOISO 2.5KV OPN COLLECTOR 5SOP På lager: 5068 pcs RFQ</p>
 <p>PS92D05NS producenter: C&K Beskrivelse: SWITCH PUSHBUTTON På lager: 119711 pcs RFQ</p>	 <p>PS9303L-V E3-AX producenter: CEL (California Eastern Laboratories) Beskrivelse: OPTOISO 5KV PUSH PULL 6DIP GW På lager: 5368 pcs RFQ</p>